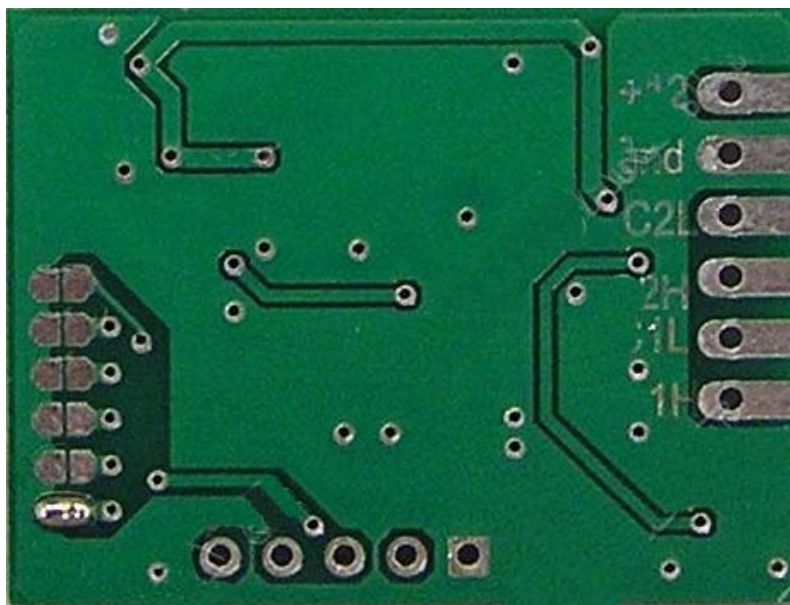
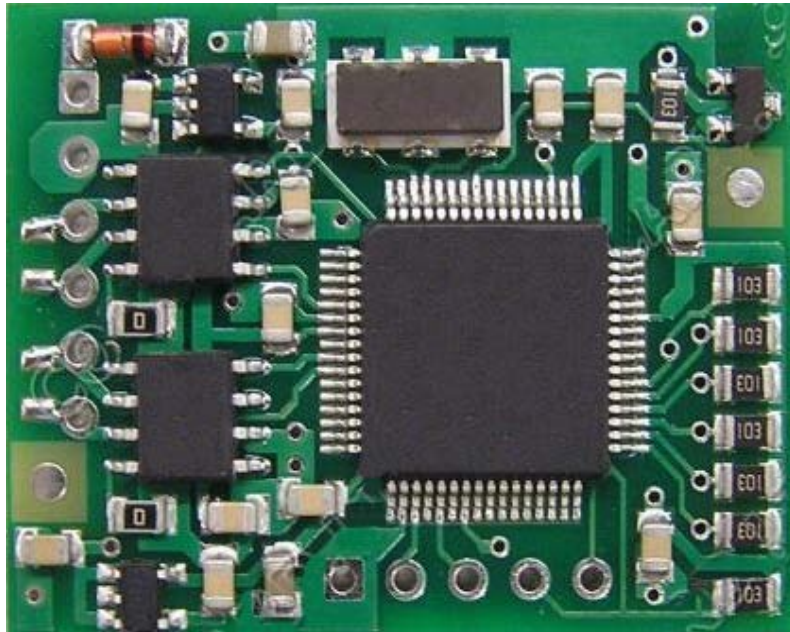


## CODECARD BMW CIC emulator connection manual

You will need soldering iron and some electric skills.

- For first prepare **BMW CIC emulator** board: solder 6 wires ~ 15cm long to emulator C1H, C1L, C2H, C2L, GND and +12 points. This will help you in installation process.

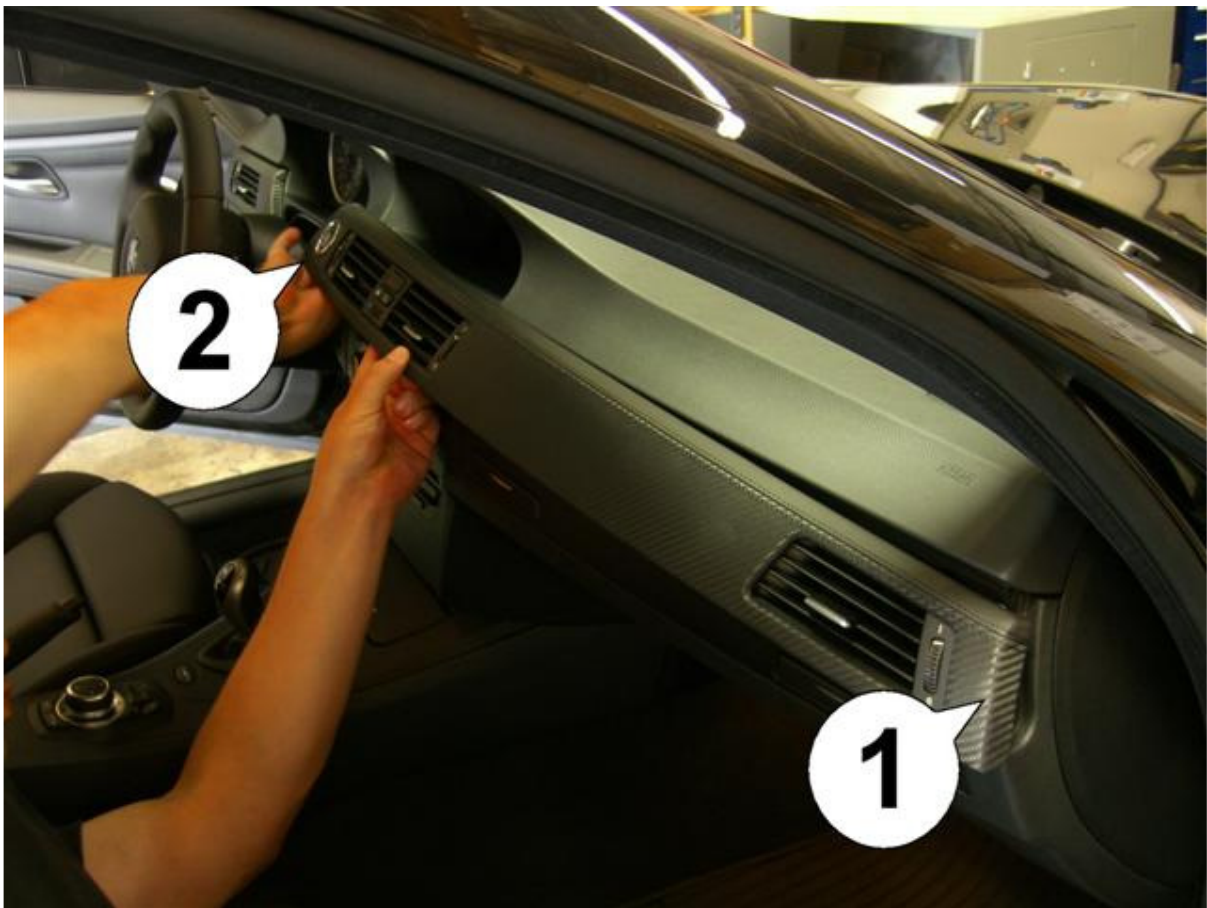


How to remove CIC on E90 you can found on:

<http://www.e90post.com/forums/showthread.php?t=264254> --- thank you for this info

Steps 1-3

**1. IMPORTANT: Turn ignition off, and pull key from ignition lock before installing the emulator! Better is also remove battery negative plug. Remove the trim by pulling out on the end (1) and the middle (2). Unclip the plugs from the START/STOP button and the button panel between the air vents.**



**2. Pull out the Climate Control panel and disconnect the plugs on it's back.**



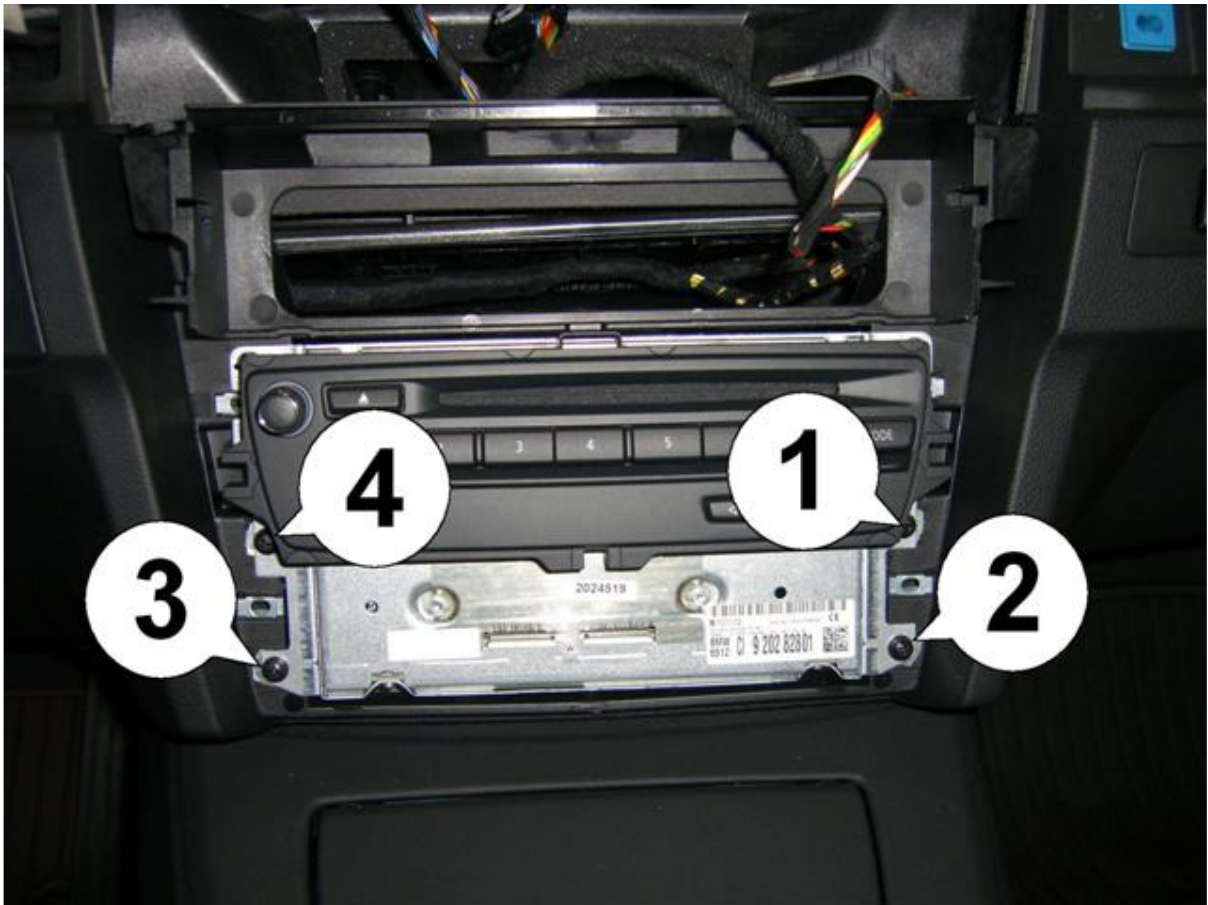
**3. Remove cover plate from Multimedia unit keypad. Like all the other parts it is just snapped in place.**



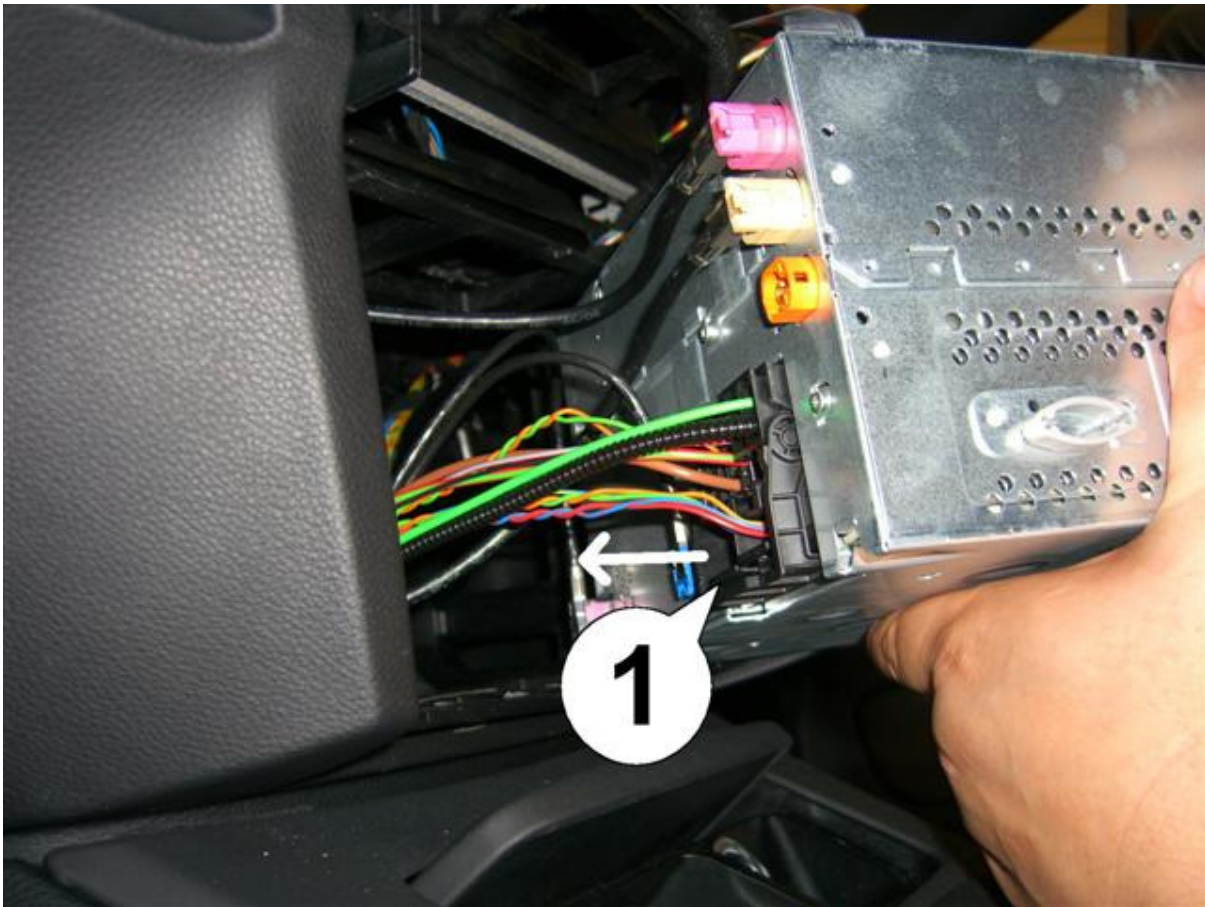


Steps 4-6

**4. Remove the 4 screws shown in the picture. Then pull Multimedia unit out. Be careful not to scratch the gear shifter (use towel).**



**5. Unplug the large black plastic plug by squeezing the tabs (1) together while pulling outward (direction of the arrow).**

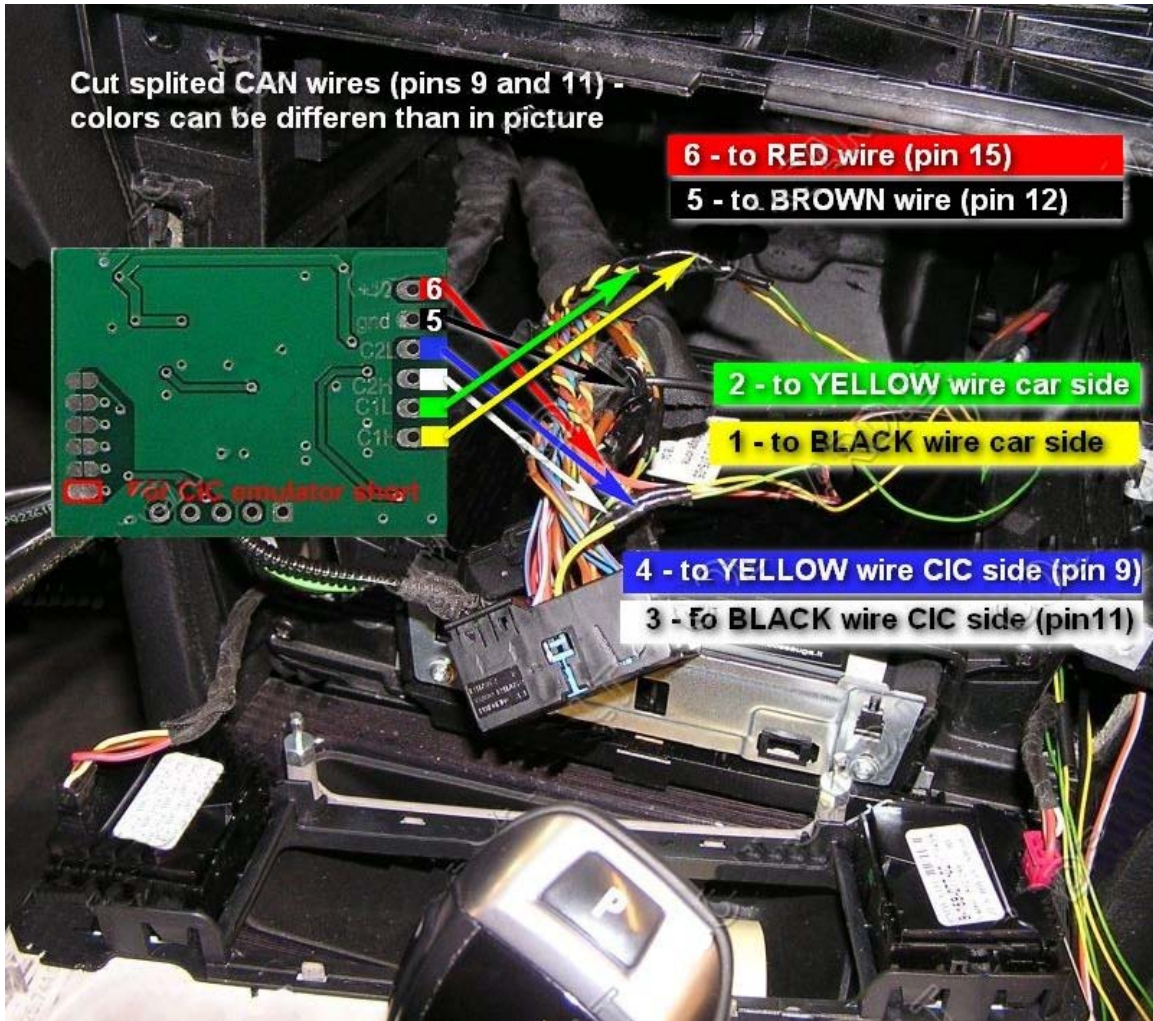


Disconnect CIC unit. Find spitted CAN wires – pins 9 and 11. Cut these wires. Connect emulator like in picture





After connection insulate BMW CIC emulator board with heat shrink or insulation tape.





## CIC emulator installation inside CIC

Just look installation pictures.







